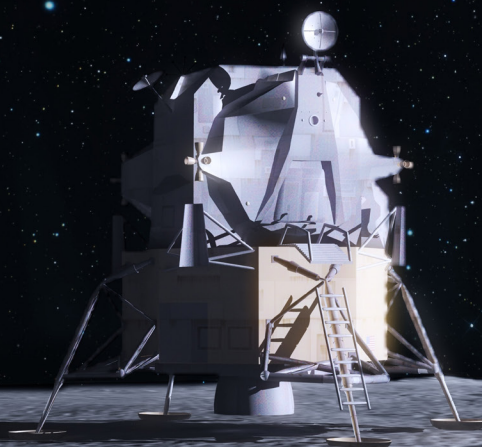


MeTEOR Performance Task

Fifth Grade

Mathematics
To the Moon and Back



800-699-7516 | meteoreducation.com

MeTEOR
CONNECTING THE DOTS

Complete Performance Task Scoring Rubric *To the Moon and Back*

42-52 Proficient 31-41 Good 21-30 Satisfactory 10-20 Poor 0-9 Unsatisfactory

	Depth of Knowledge Level	Points	Total Possible Points for Task	Total Points Earned by Student
Task 1:				
A. Answers will vary. Student receives full points for creating a paragraph explaining what “I love you to the moon and back” means with examples.	2	3	10	
B. Answers will vary. Student receives full points for a reasonable explanation.	2	3		
C. Student receives full points for participating in the creation of a class number line to visually represent the smallest estimated number to the greatest number.	1	1		
D. Answers will vary based on the class estimations. Student receives 1 point for each viable answer for mean, median and mode.	1	3		
Task 2:				
A. Student receives full points individual responses. Example responses could include: both miles and km. measure length/distance. At school we use the US customary unit of measurement more so I would use miles to measure the distance.	1	2	6	
B. 477,710 miles or 768,800 km	2	1		

C. Student receives full points for participating in partner discussion.	1	1		
D. Individual responses will vary based on estimation	2	2		
Task 3:			6	
A. Student receives full points for participating in the creation of a scale showing the distance between Earth and the Moon.	2	2		
A. Measurement from basketball Earth and tennis ball Moon are accurate- 23 feet and 7 inches.	1	2		
B. Student receives full points for participating in group discussion on scale model of Earth and Moon.	2	2		
Task 4:			20	
A. Student receives full points for creating 3 questions for NASA (based on information from the text).	2	5		
B. Answers will vary. Full points for a reasonable description.	3	5		
C. 180 hours and 38 minutes (109 hours + 42 minutes + 48 hours + 22 hours + 56 minutes).	2	5		
D. 162 hours and 34.2 minutes ($1/10 \times 180 = 18$, $1/10 \times 38 = 3.8$).	2	5		
Task 5:	4		10	
A. Student receives full points for writing an opinion paper with evidence to support the claim: "Can you love someone to the moon and back?"		10		
TOTAL POINTS:				



meteoreducation.com . 800.699.7516

MeTEOR CONNECT, MeTEOR Education and MeTEOR Design are trademarks or registered trademarks of MeTEOR Education, LLC © 2019.

All rights reserved. PTMATH5.4